

Coaxial Frequency Mixer

ZAM-42

Level 7 (LO Power +7 dBm) 1500 to 4200 MHz

Maximum Ratings

Operating Temperature	-55°C to 100°C
Storage Temperature	-55°C to 100°C
RF Power	50mW
IF Current	40mA

Permanent damage may occur if any of these limits are exceeded.

Coaxial Connections

LO	2
RF	1
IF	3

Features

- low conversion loss, 5.67 dB typ.
- wideband, 1500 to 4200 MHz
- rugged shielded case

Applications

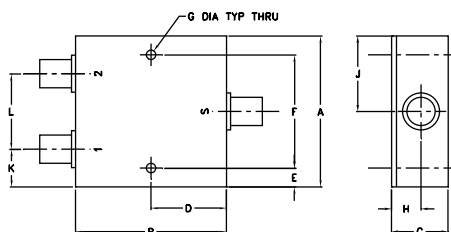
- PCS
- MMDS
- instrumentation



CASE STYLE: F14

Connectors	Model
SMA	ZAM-42

Outline Drawing



A		B		C		D		E		F		G	
H		J		K		L		wt		grams		170.0	
2.00	2.00	0.75	1.00	0.25	1.500	0.125							
50.80	50.80	19.05	25.40	6.35	38.10	3.18							
0.39	1.00	0.50	1.00										
9.91	25.40	12.70	25.40										

Electrical Specifications

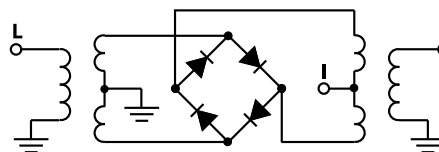
FREQUENCY (MHz)	CONVERSION LOSS (dB)	LO-RF ISOLATION (dB)		LO-IF ISOLATION (dB)	
		Typ.	Min.	Typ.	Min.
1500-4200	DC-500	25	14	18	10

1 dB COMP.: +1 dBm typ.

Typical Performance Data

Frequency (MHz)	Conversion Loss (dB)	Isolation L-R (dB)	Isolation L-I (dB)	VSWR RF Port (:1)	VSWR LO Port (:1)
1500.00	1450.00	5.47	27.2	2.52	6.05
1555.26	1505.26	5.66	27.0	2.55	6.05
1731.58	1681.58	5.63	26.0	2.80	7.60
1907.89	1857.89	5.74	26.2	2.88	7.28
2000.00	1950.00	6.02	26.9	2.76	7.00
2084.21	2034.21	6.33	26.9	2.76	7.00
2260.53	2210.53	6.59	26.3	2.80	7.60
2436.84	2386.84	7.00	25.8	3.06	8.31
2613.16	2563.16	6.59	25.6	2.80	5.85
2789.47	2739.47	5.91	23.8	2.80	5.03
2965.79	2915.79	5.58	21.7	2.52	5.49
3000.00	2950.00	5.59	21.4	2.40	6.05
3142.11	3092.11	5.40	20.7	2.01	4.12
3318.42	3268.42	5.79	21.3	1.65	2.84
3494.74	3444.74	5.92	20.8	2.30	2.96
3671.05	3621.05	5.51	21.1	1.94	4.12
3847.37	3797.37	5.78	22.2	1.97	4.89
4000.00	3950.00	5.81	23.2	1.91	5.33
4023.68	3973.68	5.91	23.4	1.92	5.03
4129.00	4079.00	5.93	24.0	1.97	4.89
4200.00	4150.00	5.99	24.9	2.14	4.89

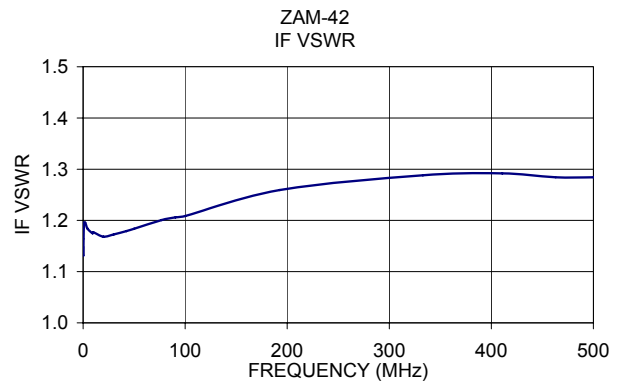
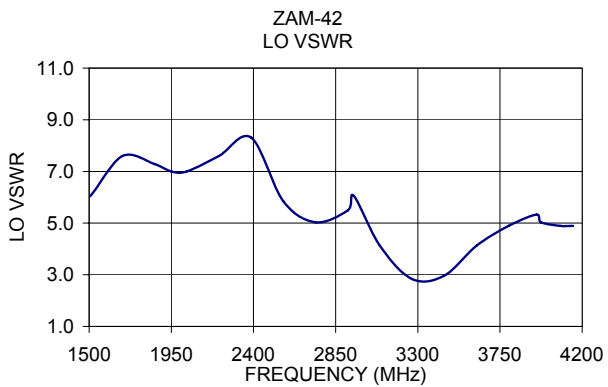
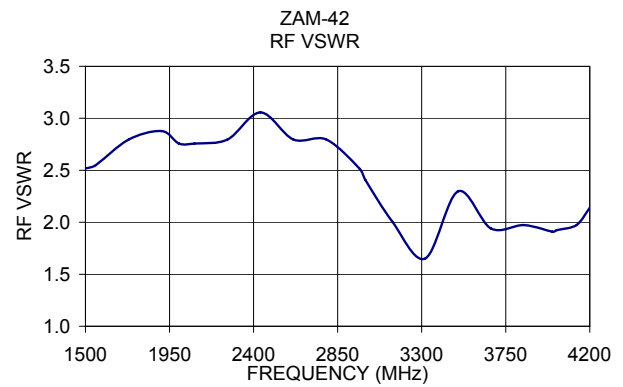
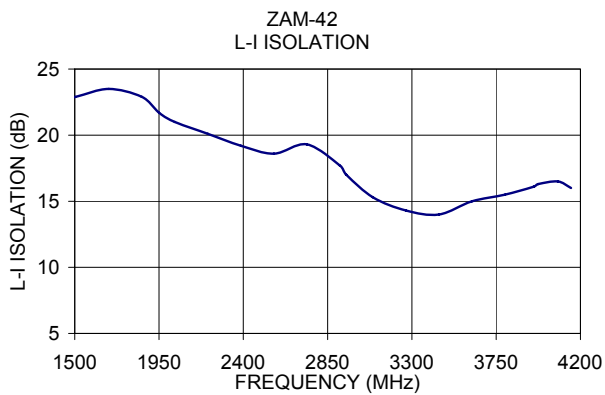
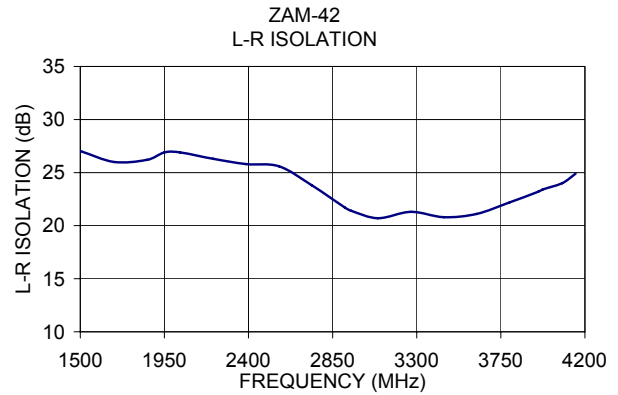
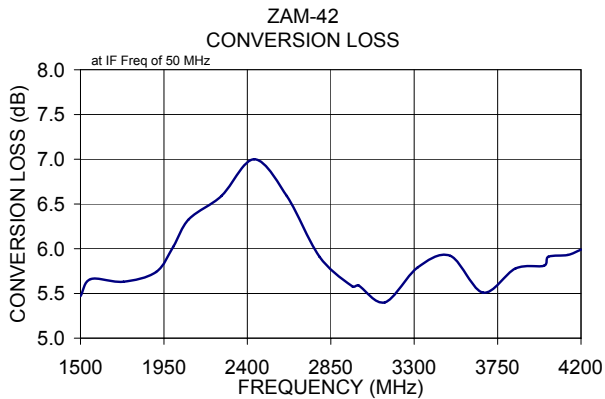
Electrical Schematic



Notes

- A. Performance and quality attributes and conditions not expressly stated in this specification document are intended to be excluded and do not form a part of this specification document.
 B. Electrical specifications and performance data contained in this specification document are based on Mini-Circuit's applicable established test performance criteria and measurement instructions.
 C. The parts covered by this specification document are subject to Mini-Circuits standard limited warranty and terms and conditions (collectively, "Standard Terms"); Purchasers of this part are entitled to the rights and benefits contained therein. For a full statement of the Standard Terms and the exclusive rights and remedies thereunder, please visit Mini-Circuits' website at www.minicircuits.com/MCLStore/terms.jsp





Notes

- A. Performance and quality attributes and conditions not expressly stated in this specification document are intended to be excluded and do not form a part of this specification document.
- B. Electrical specifications and performance data contained in this specification document are based on Mini-Circuit's applicable established test performance criteria and measurement instructions.
- C. The parts covered by this specification document are subject to Mini-Circuits standard limited warranty and terms and conditions (collectively, "Standard Terms"); Purchasers of this part are entitled to the rights and benefits contained therein. For a full statement of the Standard Terms and the exclusive rights and remedies thereunder, please visit Mini-Circuits' website at www.minicircuits.com/MCLStore/terms.jsp